

2021-2022

Annual Report

McHenry County  
Regional Office of Education

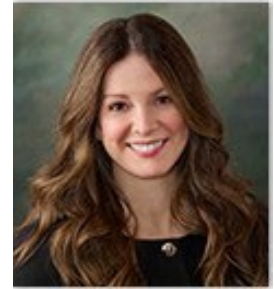
408 S. Route 31  
McHenry, IL 60050  
815.334.4475

Hours of Operation: Mon-Thurs 8 AM – 4:30 PM and Fri 8 AM – 3:30 PM

# LETTER FROM THE SUPERINTENDENT

Dear McHenry County Education Stakeholders,

I am honored to present the McHenry County Regional Office of Education's 2022 Annual Report. This report provides insight how the ROE supported education during the 2021-2022 school year.



Diana Hartmann, Ed. S.

This report is an overview and is not inclusive of all the services and collaborative partnerships the Regional Office of Education provides as an educational leader for the benefit of the schools and citizens of McHenry County.

This report uses information from reports of our programs and services and from reports at the Illinois State Board of Education website. This is comprehensive as possible but will not encompass every activity.

The mission of the McHenry County Regional Office of Education is to serve as an advocate for education by providing effective leadership, performing regulatory functions in partnership with the Illinois State Board of Education as directed by the School Code of Illinois, coordinating, and delivering state and local services, and disseminating information to educators, school districts and the community.

On behalf of the Regional Office of Education, we thank you. Our best wishes to the students, teachers, service providers, administrators, and district personnel at our 18 school districts, 1 safe school, multiple private schools for continued success in the current school year and future.

Sincerely,

*Diana Hartmann*

# WHAT’S NEW AT THE ROE

The Regional Office of Education moved on December 15/16, 2022, to 408 S. Rt. 31, McHenry IL 60050. This allows the office to open a Pearson testing center in early 2023. Educational state testing is done through Pearson as well as multiple other industry exams.

# ABOUT US

The Regional Office of Education currently takes appointments for work permits, fingerprinting, and high school diploma/transcripts requests. Please call 815.334.4475 to make an appointment.

Services include the following:

- Work permits for minor children ages 0-15
- Fingerprinting and background checks
- High school diplomas and transcripts
- New and renewal licensure support

The hours of operation are Mon-Thurs 8 AM – 4:30 PM and Fri 8 AM – 3:30 PM.

# TABLE OF CONTENTS

Regional Office of Education Divisions . . . . .	4
Who We Serve . . . . .	5
Attendance and Truancy Division . . . . .	6
Health Life Safety and Compliance Visits . . . . .	6
Bus Driver Training . . . . .	6
Background Check and Fingerprinting . . . . .	7
High School Equivalency . . . . .	7
Educational Services Division . . . . .	7
6 <sup>th</sup> Day Enrollment Figures . . . . .	8
Regional Board of School Trustees . . . . .	9
Staff Directory . . . . .	10

# ROE DIVISIONS

## **Attendance and Truancy**

The Attendance and Truancy Division is McHenry County's truancy and dropout prevention program funded by the Illinois State Board of Education since 1985. The division is an intervention toll that is available to all schools in McHenry County. Intervention occurs when schools refer students for poor attendance/truancy. Outreach and truancy staff complete an assessment of all students referred and with input from both the school and family, develop an individualized service plan tailored to each student. The staff acts as referral agents and on-going liaisons between the schools, families, and community resources.

## **Regional Safe School**

The Regional Safe School Program of McHenry County serves disruptive students in grades 6-12 who have received multiple suspensions, are eligible for expulsion, or have been expelled from school in McHenry County. The students we serve often face long-term issues such as domestic violence, poverty, and drug and alcohol abuse, which influence behavior in the classroom. Our goal is to provide students with techniques to improve their decision-making skills that affect their school and home life, attendance and performance, and ability to transition to work or further schooling.

## **Education Services**

The Educational Services Division provides a wide variety of professional learning opportunities that are action-oriented and focused on measurable results. We collaborate with educators and school leaders to implement research-based practices in education that support the development of needed skills in students. Administrator academies, guest speakers, workshops, and on-site training that aligns to district goals is delivered. We are committed to providing high quality personalized professional learning for our educators and administrators. We are continuously seeking opportunities to form new partnerships to support McHenry County districts.

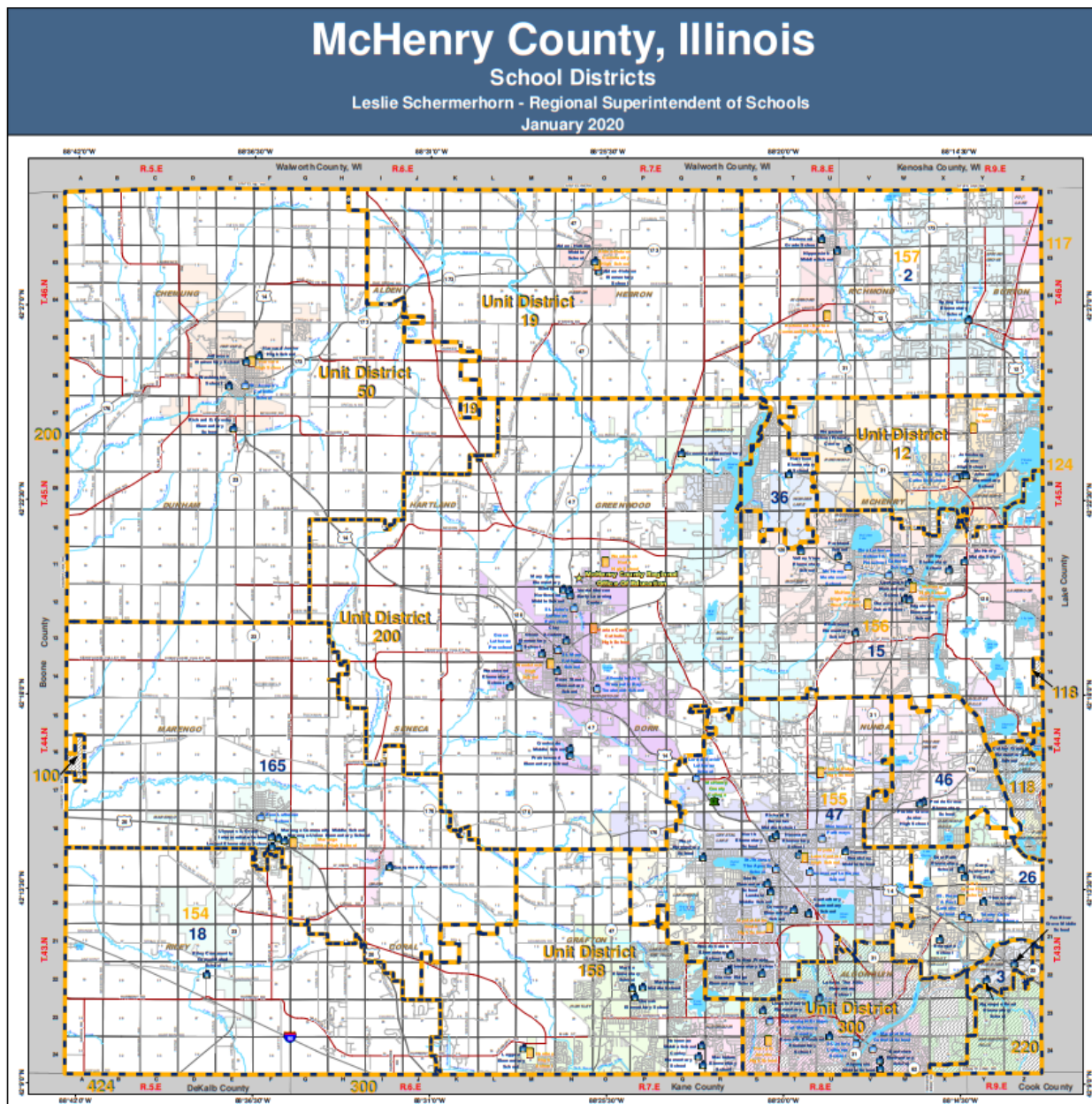
# WHO WE SERVE

## Schools/Buildings:

- 76 Public Schools
- 27 Non-Public Schools (K-12)
- 9 Non-Public Schools (Pre-K)
- 1 Regional Safe School

## Professionals:

- 316 Administrators
- 3,294 Teachers
- Substitutes
- Paraprofessionals
- Service Personnel (Social Workers, Psychologists, School Nurses, Speech Language Pathologists, School Counselors)



## Attendance & Truancy Division

**Total Referrals:** 322 (Aug '21 – May '22)

**Special Education:** 121

**Reason:** Chronic Truancy: 322

**Home Visits:** 1,400+

**Comparison by Gender**

Male: 166

Female: 156

**School Visits:** 600+

**Letters Sent:** 322

**Truancy by Grade**

Elementary (K-5): 77

Middle (6-8): 132

High (9-12): 113

**Truancy Hearings:** 101

**Court Cases:** 9

## Health Life Safety & Compliance Visits

**Annual Health/Life Safety Inspections Completed:** 76

**Construction Permits Issue:** 37

**Compliance Visits:** 0 (Covid)

## Bus Driver Trainings

**Initial Classes:** 13 classes 139 drivers

**Refresher Classes:** 38 classes 765 drivers



## Background Check / Fingerprinting

**Background Check / Fingerprints Submitted:** 1,391

**Substitute Background Check / Fingerprints Submitted:** 299

The Regional Office of Education provides fingerprinting services for most McHenry County Schools. Both public and non-public schools along with independent cab companies. The Illinois School Code requires all new employees to have both a State and FBI criminal background check. The electronic submission of fingerprints allows the Schools or the ROE to typically receive results within 24- 72 hours, so the employment can start quickly.

## High School Equivalency (HSE)

121 Requests for verification including requests for new, duplicate certificates and transcripts.

## Educational Services Division

**Workshops Held:** 12

<b><u>Workshop Title</u></b>	<b><u>Date</u></b>
Beyond ACES: A Focus on Protective Factors	12/14/2022
Navigating the New Computer Literacy Standards	11/15/2022
Tier 1 Universal Strategies and Tier 2 Structural Interventions: Social-Emotional Practices and Supports	10/19/2022
AA1801 Prof Practice Refresher for Those That Evaluate Teachers	10/19/2022
District Orientation to Building Permits, Occupancy, HLS	09/26/2022
AA3000 Student Growth	09/08/2022
AA1865 Refresher	09/07/2022
AA2000 Initial 2-Day Training to Evaluate Administrators	09/07-08/2022
Asian American Curriculum Act training	09/02/2022
Threat Assessment	08/09/2022
AA3700 Health Life Safety and Compliance	05/18/2022
AA3000 Student Growth	04/12/2022

# Sixth Day Enrollment Figures

September 2020 – 2022

District	2020	2021	2022
Nippersink 2	1,136	1,051	1,100
Fox River Grove 3	393	384	395
Johnsburg 12	1,807	1,678	1,662
McHenry 15	4,332	4,062	4,029
Riley 18	277	258	270
Alden-Hebron 19	410	369	407
Cary 26	2,460	2,280	2,350
Harrison 36	375	362	357
Prairie Grove 46	712	680	769
Crystal Lake 47	7,316	7,006	6,973
Harvard 50	2,679	2,561	2,502
Marengo 154	658	657	655
Crystal Lake 155	5,772	5,674	5,583
McHenry 156	2,146	2,146	2,185
Richmond-Burton 157	611	580	565
Huntley 158	9,109	8,776	8,590
Marengo-Union 165	1,036	977	1,007
Woodstock 200	6,322	6,001	6,167
Totals	47,551	45,502	45,566



# Regional Board of School Trustees

The McHenry County Regional Board of School Trustees is an elected board comprised of seven members. This elected board hears petitions for annexations, detachments, and changes in school district boundaries. The Regional Superintendent acts as the Ex-Officio Secretary to the Board. The Regional Office maintains all records of petitions filled in the region.

The main responsibilities of the Regional Board of School Trustees are:

- Hearing and disposal of petitions for change of school district boundaries
- Hearing and disposal of petitions by school districts to withdraw from Joint Agreements/Cooperatives
- Appointment of appraisers and approval of final settlements in the division of assets when new districts are formed

Regional Board of School Trustees meetings are held quarterly in January, April, July, and October; special meetings are scheduled as necessary. We appreciate the service of the following individuals who are currently serving.

<b>Trustee</b>	<b>Service Began</b>	<b>Current Term Expires</b>
Karen Tirio Elected Chairperson	2021	2027
Nancy Swart	2022	2023
Dana Dalton-Wiley	2022	2027
Michelle Martin	2022	2023
Tim Sebastian	2022	2025
Kelsey Profit	2022	2027
Meredithe Bodnar	2022	2025

# Staff Directory

<b>Administrative Team</b> Diana Hartmann, Ed. S. Christopher Zielinski	Regional Superintendent Assistant Regional Superintendent	dkhartmann@mchenrycountyil.gov cmzielinski@mchenrycountyil.gov
<b>Attendance and Truancy</b> Tim Dempsey Garrett Haar Alina Valadez	Truancy Officer Assistant Truancy Officer Outreach Specialist	tpdempsey@mchenrycountyil.gov gjhaar@mchenrycountyil.gov axvaladez@mchenrycountyil.gov
<b>Educator Licensure</b> Annette Jablonski	Educator Licensure	aajablonski@mchenrycountyil.gov
<b>Administrative Assistant</b> Kim Walters	Administrative Specialist II	kdwalters@mchenrycountyil.gov



408 S. Route 31  
 McHenry, IL 60050  
 815.334.4475